

FLOOR STRUCTURE IN SAN MARCO BASILICA'S BOOKSHOP

LOCATION

The narthex of San Marco's Basilica, that is the area between the naves and the main facade of the church.

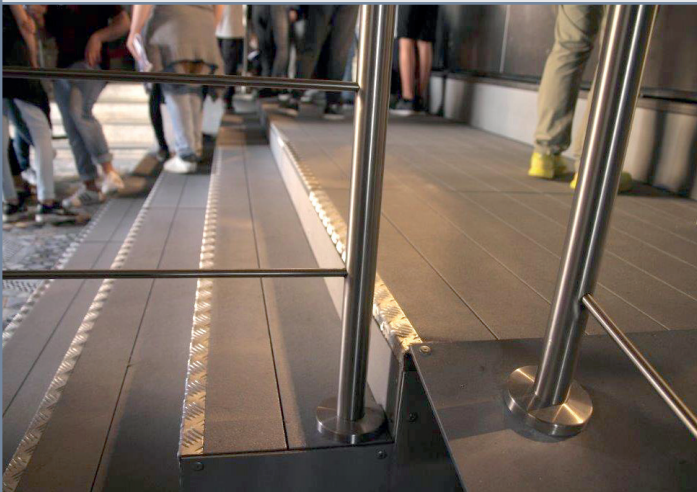
CLIENT

Specilized architectural firm for turnkey projects.

LOCATION VENICE

USE FLOOR

PRODUCT COVERED SURFACE GRATING TYPE SCH38/25C AND LAMINATED SHEETS BOTH WITH Q-PAINT FINISHING



OBJECTIVE

After that the Procuratoria of S. Marco's Basilica itself visited M.M.'s works and examined the material, they instructed to use FRP products for the floor of the bookshop's structure.

That particular area of the Basilica is characterized by a high humidity level and frequent floods. In consideration of the artistic/architectural relevance of the floor, the material needed to be light so not to weigh excessively on the mosaics and also be aesthetically appropriate.

Due to the numerous visitors' passages, the floor absolutely had to be antiskid.

SOLUTION

The FRP is a material that is normally used in humid environments. The test carried out with the exposure to heat, cold and humidity cycles according to the EN ISO 9142/04 norm, determined that there is no evidence of defects.

The product supplied by M.M. was grey and perfectly integrated in the surrounding environment. It went through a particular cutting finishing that imitates the "boards" effect for an improved aesthetical result.

The Q-PAINT surface finishing guarantees antiskid characteristics as per the DIN 51097 norm (suitable for bare feet).

The installation was rapid and effortlessly because of the lightness of the product and its easy workability. No special installation equipment was required.